

AUX

C-SERIES

AJAN / AFEB / AMAR



SOFT MODE

Airflow through over 3 000 micro vents produces gentle airflow while preventing drafts for ultimate comfort. Perfect to use while sleeping.

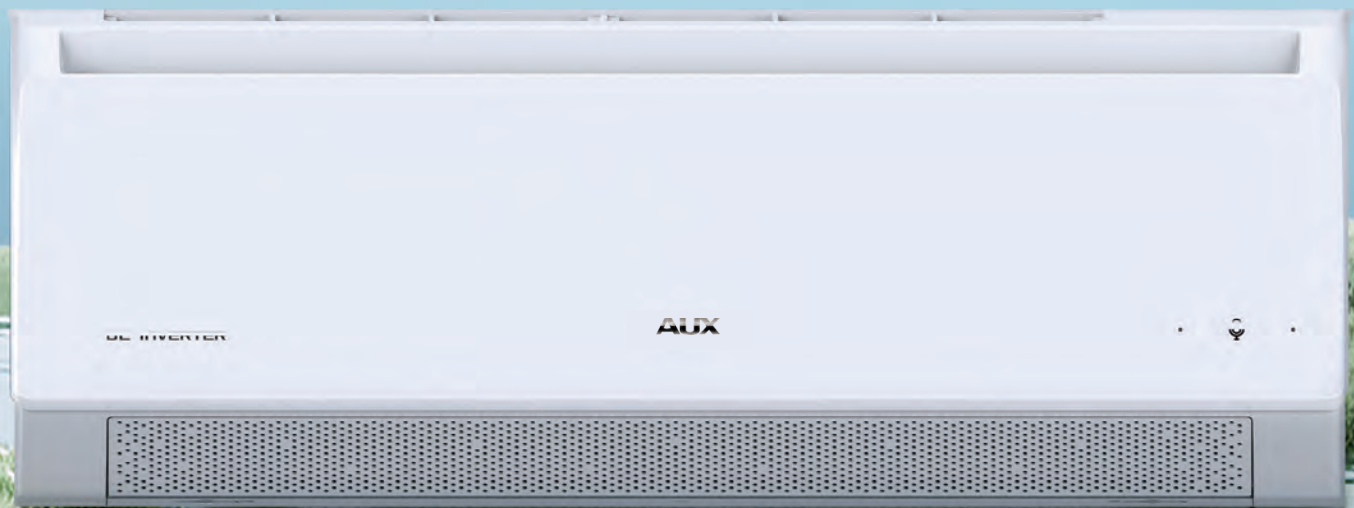
Micro vents: 1 729 (09 K) 1 935 (12 K) 2 921 (18 K)
Except AJAN36 K/AMAR24 K



• PATENT No : 202121995992.8/ 202322368367.6

ECO MODE - ENERGY SAVINGS

Adjusting in frequency according to the temperature difference at cooling mode, saving power and energy



VOICE CONTROL

Easily operate the AC from across the room with your voice and simple commands.

No remote or app required.

*Voice control is only available in English.



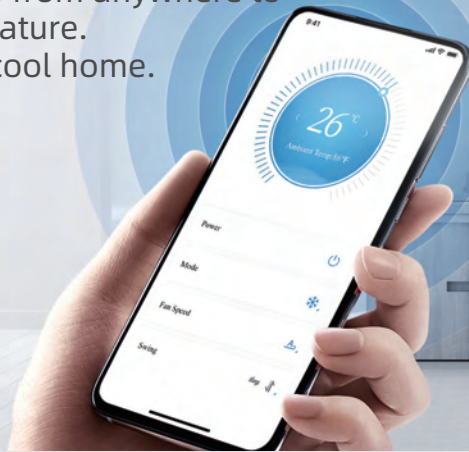
I'm here

Hey, Lisa

*Excluding
AJAN 24 K & AMAR 24 K

REMOTE CONTROL WI-FI

Easily use the app from anywhere to adjust the temperature. Come home to a cool home.



EASY INSTALLATION

With an installation guide, plate support and built-in level, installation can be done with only one technician instead of two, reducing labor costs.



4) Plate Support

3) Removable
Lower Part

*Except : AJAN 36 K/AMAR 24 K



1) Installation Guide Plan



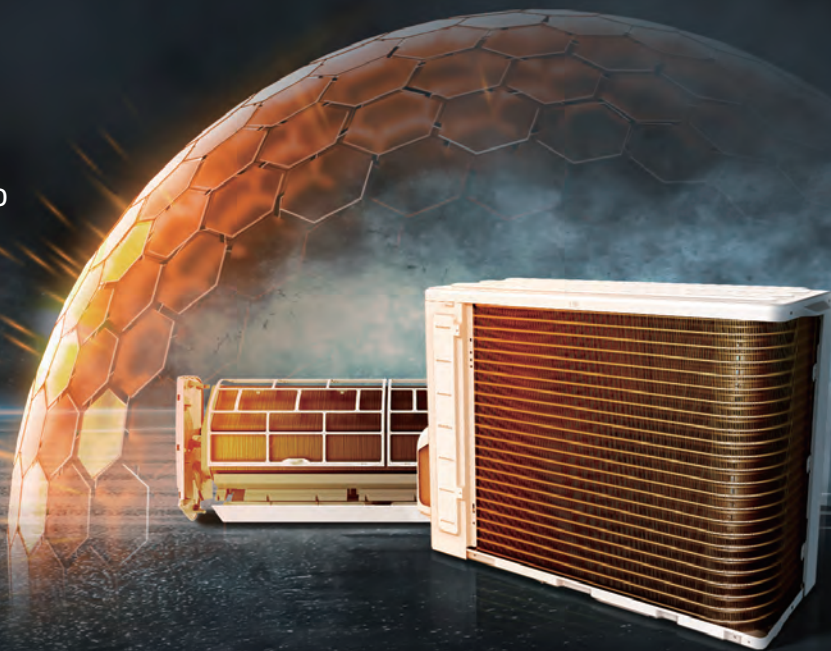
2) Installation Plate

Integrated Level



GOLDEN FIN

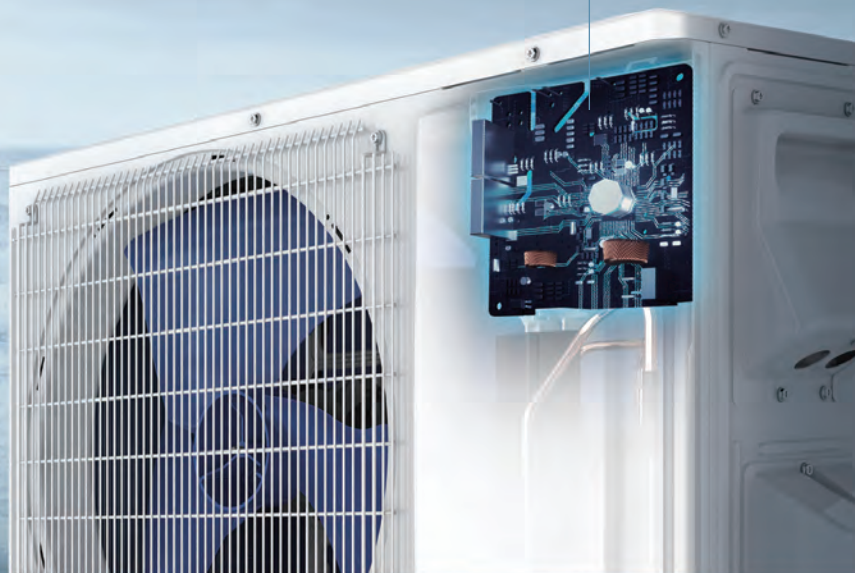
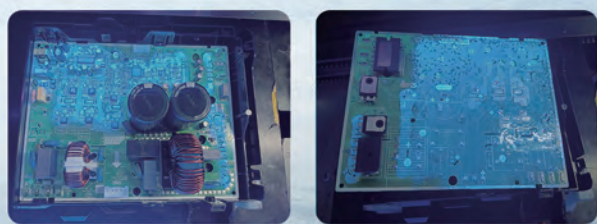
Gold finned indoor and outdoor units helps to reduce corrosion and oxidation over conventional blue finned models.



THREE-PROOFING OF THE CIRCUIT BOARD

UV adhesive cover helps to reduce corrosion which lowers failure rates and lowers maintenance needs for the air conditioner.

Vertical placement prevents deposition or deformation, reducing damage rates.



BASE PAN HEATING

A heater in the base pan automatically turns on in low temperatures to reduce freezing and improve efficiency.

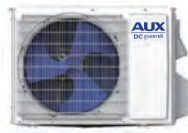


Indoor Unit

CA



Outdoor Unit



Remote



(Only SEER25-24 K/SEER20-34 K)



Micro Vent
(Not in SEER20 36 K)



4D Wind



Auto Cleaning



Easy Maintenance



Base Pan Heater



Easy Installation



ECO

SPECIFICATIONS

AJAN MODEL

Model	AJAN09HP115V1C	AJAN09HP230V1C	AJAN12HP115V1C	AJAN12HP230V1C	AJAN18HP230V1C	AJAN24HP230V1C	AJAN36HP230V2C
Indoor Unit	AJAN09HP115V1CH	AJAN09HP230V1CH	AJAN12HP115V1CH	AJAN12HP230V1CH	AJAN18HP230V1CH	AJAN24HP230V1CH	AJAN36HP230V2CH
Outdoor Unit	AJAN09HP115V1CO	AJAN09HP230V1CO	AJAN12HP115V1CO	AJAN12HP230V1CO	AJAN18HP230V1CO	AJAN24HP230V1CO	AJAN36HP230V2CO
AHRI Certified Reference Number	214290025	214290013	214290026	214290031	214290028	214290029	215876499

Cooling

Capacity	Rated	Btu/h	9100	9100	12000	12000	18000	24000	33600
Capacity Range	Min~Max	Btu/h	1700~12000	1700~12600	1700~13300	1700~13300	2900~20000	4300~25200	7500~35500
Power Input	Rated	W	800	758	1250	1212	1638	2020	3320
Dehumidifying		kg/h [lbs/h]	0.7 [1.5]	0.7 [1.5]	1 [2.2]	1 [2.2]	1.6 [3.5]	2.6 [5.7]	3.6 [7.9]

Heating

Capacity at 47 °F [8,3 °C]	Rated	Btu/h	9500	10000	12300	12300	19100	24000	34000
Capacity Range	Min~Max	Btu/h	1700~14000	1700~14000	1700~15000	1700~15000	4400~22600	5300~27300	8300~42000

Efficiency

SEER2	Btu/h/W	20	22	20	21	20	20	20
HSPF2(IV)	Btu/h/W	8.5	9.2	8.5	8.8	9	9	8.5
HSPF2(V)	Btu/h/W	7	7	7	7	6.4	8	7.5
EER2	Btu/h/W	11.4	12	9.6	9.9	11	11.9	10.1
COP	W/W	3.48	3.7	3.43	3.5	3.3	3.4	3.3

Indoor Unit

Air Flow Rate (SH/H/M/L/Q)	m3/h [CFM]	603/535/479/433/305 [355/315/282/255/180]	603/535/479/433/305 [355/315/282/255/180]	645/560/513/463/328 [380/330/302/273/193]	645/560/513/463/328 [380/330/302/273/193]	951/842/742/642/428 [560/496/437/378/252]	1248/1107/975/844/562 [735/652/574/497/331]	1597/1415/1260/1080 [940/833/742/636]	
Weight	Net	kg [lbs]	8 [17.7]	8 [17.7]	8.5 [18.8]	8.5 [18.8]	11 [24.2]	14 [30.9]	16 [35.3]
Dimension W*H*D	Net	mm [in]	774*301*200 [30.5*11.8*7.9]	774*301*200 [30.5*11.8*7.9]	834*301*200 [32.8*11.8*7.9]	834*301*200 [32.8*11.8*7.9]	1002*319*223 [39.4*12.6*8.8]	1145*335*230 [45.1*13.2*9.0]	1250*359*253 [49.2*14.1*9.9]
	Packing	mm [in]	831*371*282 [32.7*14.6*11.1]	831*371*282 [32.7*14.6*11.1]	891*371*282 [35.1*14.6*11.1]	891*371*282 [35.1*14.6*11.1]	1070*385*312 [42.1*15.2*12.3]	1210*400*327 [47.6*15.7*12.9]	1340*445*355 [52.7*17.5*14.0]
Sound Pressure Level		dB (A)	41/36/34/31/26	41/36/34/31/26	43/40/36/33/27	43/40/36/33/27	49/46/42/37/29	50/48/44/39/33	51/48/44/39/34

Outdoor Unit

Weight	Net	kg [lbs]	23.5 [51.8]	25 [55.1]	23.5 [51.8]	25 [55.1]	30 [66.1]	44 [97]	48 [105.8]
Dimension W*H*D	Net	mm [in]	714*538*277 [28.1*21.2*10.9]	714*538*277 [28.1*21.2*10.9]	714*538*277 [28.1*21.2*10.9]	714*538*277 [28.1*21.2*10.9]	788*557*303 [31.0*21.9*11.9]	896*700*340 [35.3*27.6*13.4]	896*700*340 [35.3*27.6*13.4]
	Packing	mm [in]	825*595*345 [32.5*23.4*13.6]	825*595*345 [32.5*23.4*13.6]	825*595*345 [32.5*23.4*13.6]	825*595*345 [32.5*23.4*13.6]	903*615*382 [35.6*24.2*15.0]	1015*762*425 [40.0*30.0*16.7]	1015*762*425 [40.0*30.0*16.7]
Sound Pressure Level	Rated	dB (A)	51	51	52	52	53	58	59

Piping

Diameter	Liquid (O.D.)	mm [in]	6.35 [1/4]	6.35 [1/4]	6.35 [1/4]	6.35 [1/4]	6.35 [1/4]	6.35 [1/4]	6.35 [1/4]
	Gas (O.D.)	mm [in]	9.52 [3/8]	9.52 [3/8]	9.52 [3/8]	9.52 [3/8]	12.7 [1/2]	15.88 [5/8]	15.88 [5/8]
Max. Length		m [ft]	20 [65]	20 [65]	20 [65]	20 [65]	30 [100]	30 [100]	30 [100]
Min. Length		m [ft]	2.74 [9]	2.74 [9]	2.74 [9]	2.74 [9]	2.74 [9]	2.74 [9]	2.74 [9]
Max. Height		m [ft]	15 [50]	15 [50]	15 [50]	15 [50]	20 [65]	20 [65]	20 [65]

Electrical

Outdoor-Indoor	V,ph,Hz	115,1,60	208/230,1,60	115,1,60	208/230,1,60	208/230,1,60	208/230,1,60	208/230,1,60
MCA	A	15	10	15	10	15	15	20
MOCP	A	25	15	25	15	20	25	35

Refrigerant

Type		R32	R32	R32	R32	R32	R32	R32
Charge	g [oz]	850 [30]	600 [21.1]	850 [30]	600 [21.1]	980 [34.6]	1250 [44.1]	2050 [72.3]

Guaranteed Temperature Operation Range

Cooling	°C [°F]	-15~52 [5~125]	-15~52 [5~125]	-15~52 [5~125]	-15~52 [5~125]	-15~52 [5~125]	-15~52 [5~125]	-15~52 [5~125]
Heating	°C [°F]	-30~24 [-22~75]	-30~24 [-22~75]	-30~24 [-22~75]	-30~24 [-22~75]	-30~24 [-22~75]	-30~24 [-22~75]	-30~24 [-22~75]

*To ensure lifetime, it is recommended that the minimum operating temperature be -25°C

※ Heating capacity at -20 °C (MAX, Btu/h)
115V(5000(09K) 6100(12K)
208/230V-5800(09K) 6100(12K) 10000(18K) 12000(24K) 17000(36K)

Remarks :
1.All specifications are subject to change by the manufacturer without prior notice.
2.All units are being tested and comply to ISO 5151 .
3.Sound pressure levels are measured in anechoic chamber. During actual operation, sound pressure level will be higher as a result of room specification condition
4.Date from AUX lab, 08/03/24. Data may change according to test surroundings. AUX reserves right of explanation on data.



Indoor Unit



Outdoor Unit



Remote



Micro Vent
(Not in SEER20 36 K)



4D Vent



Voice Control
(Besides : SEER25 24 K)



Auto+
Cleaning



Wi-fi
Function



High Air
Flow Panel



Easy
Installation



ECO

SPECIFICATIONS

AFEB MODEL

Model	AFEB09HP115V1C	AFEB09HP230V1C	AFEB12HP115V1C	AFEB12HP230V1C	AFEB18HP230V2C	AFEB24HP230V1C
Indoor Unit	AFEB09HP115V1CH	AFEB09HP230V1CH	AFEB12HP115V1CH	AFEB12HP230V1CH	AFEB18HP230V2CH	AFEB24HP230V1CH
Outdoor Unit	AFEB09HP115V1CO	AFEB09HP230V1CO	AFEB12HP115V1CO	AFEB12HP230V1CO	AFEB18HP230V2CO	AFEB24HP230V1CO
AHRI Certified Reference Number	214290017	214290014	214290019	214290020	214311531	214290023

Cooling

Capacity	Rated	Btu/h	9100	9100	12000	12000	18000	23000
Capacity Range	Min~Max	Btu/h	1700~12000	1700~12600	1700~13300	1700~13300	2900~20000	4300~28000
Power Input	Rated	W	700	700	1050	1016	1565	1910
Dehumidifying		kg/h [lbs/h]	0.7 [1.5]	0.7 [1.5]	1 [2.2]	1 [2.2]	1.6 [3.5]	2.6 [5.7]

Heating

Capacity at 47 °F [8,3 °C]	Rated	Btu/h	9700	10000	12300	12300	18000	24000
Capacity Range	Min~Max	Btu/h	1700~15000	1700~15000	1700~15500	1700~15500	4400~22600	5300~30000

Efficiency

SEER2	Btu/h/W	22	23	22	22	21.5	22
HSPF2(IV)	Btu/h/W	9.5	9.5	9.5	9.5	9.5	10
HSPF2(V)	Btu/h/W	7.5	7.5	7.5	7.5	7.5	8
EER2	Btu/h/W	13	13	11.4	11.8	11.5	12
COP	W/W	3.79	3.79	3.85	3.7	3.7	3.5

Indoor Unit

Air Flow Rate (SH/H/M/L/Q)	m3/h [CFM]	603/535/479/433/305 [355/315/282/255/180]	603/535/479/433/305 [355/315/282/255/180]	645/560/513/463/328 [380/330/302/273/193]	645/560/513/463/328 [380/330/302/273/193]	951/842/742/642/428 [560/496/437/378/252]	1248/1107/975/844/562 [735/652/574/497/331]	
Weight	Net	kg [lbs]	8 [17.7]	8 [17.7]	8.5 [18.8]	8.5 [18.8]	11.5 [25.3]	14 [30.9]
Dimension W*H*D	Net	mm [in]	774*301*214 [30.5*11.8*8.4]	774*301*214 [30.5*11.8*8.4]	834*303*214 [32.8*11.9*8.4]	834*303*214 [32.8*11.9*8.4]	1002*322*237 [39.4*12.7*9.3]	1145*337*245 [45.1*13.3*9.6]
	Packing	mm [in]	835*371*300 [32.9*14.6*11.8]	835*371*300 [32.9*14.6*11.8]	895*371*300 [35.2*14.6*11.8]	895*371*300 [35.2*14.6*11.8]	1068*392*327 [42.0*15.4*12.9]	1207*403*342 [47.5*15.9*13.5]
Sound Pressure Level		dB (A)	41/36/34/31/26	41/36/34/31/26	43/40/36/33/27	43/40/36/33/27	49/45/41/37/29	50/48/44/39/33

Outdoor Unit

Weight	Net	kg [lbs]	25.5 [56.2]	27 [59.5]	25.5 [56.2]	27 [59.5]	30 [66.1]	45 [99.2]
Dimension W*H*D	Net	mm [in]	714*538*277 [28.1*21.2*10.9]	714*538*277 [28.1*21.2*10.9]	714*538*277 [28.1*21.2*10.9]	714*538*277 [28.1*21.2*10.9]	788*557*303 [31.0*21.9*11.9]	896*700*340 [35.3*27.6*13.4]
	Packing	mm [in]	825*595*345 [32.5*23.4*13.6]	825*595*345 [32.5*23.4*13.6]	825*595*345 [32.5*23.4*13.6]	825*595*345 [32.5*23.4*13.6]	903*615*382 [35.6*24.2*15.0]	1015*762*425 [40.0*30.0*16.7]
Sound Pressure Level	Rated	dB (A)	51	51	52	52	53	58

Piping

Diameter	Liquid (O.D.)	mm [in]	6.35 [1/4]	6.35 [1/4]	6.35 [1/4]	6.35 [1/4]	6.35 [1/4]	6.35 [1/4]
	Gas (O.D.)	mm [in]	9.52 [3/8]	9.52 [3/8]	9.52 [3/8]	9.52 [3/8]	12.7 [1/2]	15.88 [5/8]
Max. Length		m [ft]	20 [65]	20 [65]	20 [65]	20 [65]	30 [100]	30 [100]
Min. Length		m [ft]	2.74 [9]	2.74 [9]	2.74 [9]	2.74 [9]	2.74 [9]	2.74 [9]
Max. Height		m [ft]	15 [50]	15 [50]	15 [50]	15 [50]	20 [65]	20 [65]

Electrical

Outdoor-Indoor	V,ph,Hz	115,1,60	208/230,1,60	115,1,60	208/230,1,60	208/230,1,60	208/230,1,60
MCA	A	15	10	15	10	15	15
MOCP	A	25	15	25	15	20	25

Refrigerant

Type		R32	R32	R32	R32	R32	R32
Charge	g [oz]	850 [30]	720 [25.4]	850 [30]	720 [25.4]	980 [34.6]	1250 [44.1]

Guaranteed Temperature Operation Range

Cooling	°C [°F]	-15~52 [5~125]	-15~52 [5~125]	-15~52 [5~125]	-15~52 [5~125]	-15~52 [5~125]	-15~52 [5~125]
Heating	°C [°F]	-30~24 [-22~75]	-30~24 [-22~75]	-30~24 [-22~75]	-30~24 [-22~75]	-30~24 [-22~75]	-30~24 [-22~75]

*To ensure lifetime, it is recommended that the minimum operating temperature be -25°C

※ Heating capacity at -20 °C (MAX, Btu/h)
115V-5800(09K) 6100(12K)
208/230V-5800(09K) 6100(12K) 10000(18K) 12000(24K) 17000(36K)

Remarks :
1. All specifications are subject to change by the manufacturer without prior notice.
2. All units are being tested and comply to ISO 5151.
3. Sound pressure levels are measured in anechoic chamber. During actual operation, sound pressure level will be higher as a result of room specification condition.
4. Date from AUX lab, 08/03/24. Data may change according to test surroundings. AUX reserves right of explanation on data.



Indoor Unit



Outdoor Unit



Remote



Micro Vent
(Not in SEER20-36 K)



4D Wind



Voice Control
(Besides : SEER25-24 K)



Auto+
Cleaning



Wi-fi
Function



High Air
Flow Panel



Easy
Installation



ECO

(Only SEER25-24 K/SEER20-36 K)

SPECIFICATIONS

AMAR MODEL							
Model		AMAR09HP115V1C	AMAR09HP230V1C	AMAR12HP115V1C	AMAR12HP230V1C	AMAR18HP230V1C	AMAR24HP230V2C
Indoor Unit		AMAR09HP115V1CH	AMAR09HP230V1CH	AMAR12HP115V1CH	AMAR12HP230V1CH	AMAR18HP230V1CH	AMAR24HP230V2CH
Outdoor Unit		AMAR09HP115V1CO	AMAR09HP230V1CO	AMAR12HP115V1CO	AMAR12HP230V1CO	AMAR18HP230V1CO	AMAR24HP230V2CO
AHRI Certified Reference Number		214290016	214290015	214290018	214290021	214290022	215876498

Cooling								
Capacity	Rated	Btu/h	9200	9200	12000	12000	18000	22500
Capacity Range	Min~Max	Btu/h	1700~13000	1700~13000	1700~13400	1700~13400	2900~22000	4300~28500
Power Input	Rated	W	657	675	1000	990	1286	1610
Dehumidifying		kg/h [lbs/h]	0.7 [1.5]	0.7 [1.5]	1 [2.2]	1 [2.2]	1.6 [3.5]	2.6 [5.7]

Heating								
Capacity at 47 °F [8,3 °C]	Rated	Btu/h	10000	10000	12300	12300	18200	24000
Capacity Range	Min~Max	Btu/h	1700~15700	1700~15700	1700~16000	1700~16000	4400~24500	5300~31000

Efficiency								
SEER2		Btu/h/W	25	25	25	25	25	25
HSPF2(IV)		Btu/h/W	10.5	10.5	10.5	10.5	10.5	10.5
HSPF2(V)		Btu/h/W	7	8	7.5	8	6.8	9
EER2		Btu/h/W	14	13.6	12	12.1	14	14
COP		W/W	3.91	3.9	4.01	3.85	4.2	4

Indoor Unit								
Air Flow Rate (SH/H/M/L/Q)	m ³ /h [CFM]		603/535/479/433/305 [355/315/282/255/180]	603/535/479/433/305 [355/315/282/255/180]	645/560/513/463/328 [380/330/302/273/193]	645/560/513/463/328 [380/330/302/273/193]	1248/1107/975/844/562 [735/652/574/497/331]	1597/1415/1260/1080 [940/833/742/636]
Weight	Net	kg [lbs]	8 [17.7]	8 [17.7]	8.5 [18.8]	8.5 [18.8]	13 [28.7]	16 [35.3]
Dimension W*H*D	Net	mm [in]	774*301*214 [30.5*11.8*8.4]	774*301*214 [30.5*11.8*8.4]	834*303*214 [32.8*11.9*8.4]	834*303*214 [32.8*11.9*8.4]	1145*337*245 [45.1*13.3*9.6]	1250*359*253 [49.2*14.1*9.9]
	Packing	mm [in]	835*371*300 [32.9*14.6*11.8]	835*371*300 [32.9*14.6*11.8]	895*371*300 [35.2*14.6*11.8]	895*371*300 [35.2*14.6*11.8]	1207*403*342 [47.5*15.9*13.5]	1340*445*355 [52.7*17.5*14.0]
Sound Pressure Level		dB (A)	41/36/34/31/26	41/36/34/31/26	43/40/36/33/27	43/40/36/33/27	50/46/43/38/31	51/48/44/39/34

Outdoor Unit								
Weight	Net	kg [lbs]	30.5 [67.2]	30.5 [67.2]	30.5 [67.2]	30.5 [67.2]	42 [92.7]	46 [101.4]
Dimension W*H*D	Net	mm [in]	788*557*303 [31.0*21.9*11.9]	788*557*303 [31.0*21.9*11.9]	788*557*303 [31.0*21.9*11.9]	788*557*303 [31.0*21.9*11.9]	896*700*340 [35.3*27.6*13.4]	896*700*340 [35.3*27.6*13.4]
	Packing	mm [in]	903*615*382 [35.6*24.2*15.0]	903*615*382 [35.6*24.2*15.0]	903*615*382 [35.6*24.2*15.0]	903*615*382 [35.6*24.2*15.0]	1015*762*425 [40.0*30.0*16.7]	1015*762*425 [40.0*30.0*16.7]
Sound Pressure Level	Rated	dB(A)	53	53	53	53	55	59

Piping								
Diameter	Liquid (O.D.)	mm [in]	6.35 [1/4]	6.35 [1/4]	6.35 [1/4]	6.35 [1/4]	6.35 [1/4]	6.35 [1/4]
	Gas (O.D.)	mm [in]	9.52 [3/8]	9.52 [3/8]	9.52 [3/8]	9.52 [3/8]	12.7 [1/2]	15.88 [5/8]
Max. Length		m [ft]	20 [65]	20 [65]	20 [65]	20 [65]	30 [100]	30 [100]
Min. Length		m [ft]	2.74 [9]	2.74 [9]	2.74 [9]	2.74 [9]	2.74 [9]	2.74 [9]
Max. Height		m [ft]	15 [50]	15 [50]	15 [50]	15 [50]	20 [65]	20 [65]

Electrical								
Outdoor-Indoor	V,ph,Hz		115,1,60	208/230,1,60	115,1,60	208/230,1,60	208/230,1,60	208/230,1,60
MCA	A		20	9	20	9	15	15
MOCP	A		25	15	25	15	20	25

Refrigerant								
Type			R32	R32	R32	R32	R32	R32
Charge	g [oz]		840 [29.6]	800 [28.2]	840 [29.6]	830 [29.3]	1200 [42.3]	1350 [47.6]

Guaranteed Temperature Operation Range								
Cooling	°C [°F]		-15~52 [5~125]	-15~52 [5~125]	-15~52 [5~125]	-15~52 [5~125]	-15~52 [5~125]	-15~52 [5~125]
Heating	°C [°F]		-30~24 [-22~75]	-30~24 [-22~75]	-30~24 [-22~75]	-30~24 [-22~75]	-30~24 [-22~75]	-30~24 [-22~75]

*To ensure lifetime, it is recommended that the minimum operating temperature be -25°C

※ Heating capacity at -20 °C (MAX, Btu/h)
115V-5800(09K) 6100(12K)
208/230V-5800(09K) 6100(12K) 10000(18K) 12000(24K) 17000(36K)

Remarks :
1. All specifications are subject to change by the manufacturer without prior notice.
2. All units are being tested and comply to ISO 5151.
3. Sound pressure levels are measured in anechoic chamber. During actual operation, sound pressure level will be higher as a result of room specification condition.
4. Date from AUX lab, 08/03/24. Data may change according to test surroundings. AUX reserves right of explanation on data.



AUX



Exclusive Distributor

ENAIRJ